

Han EMC 10 Hood Side Entry PG 21

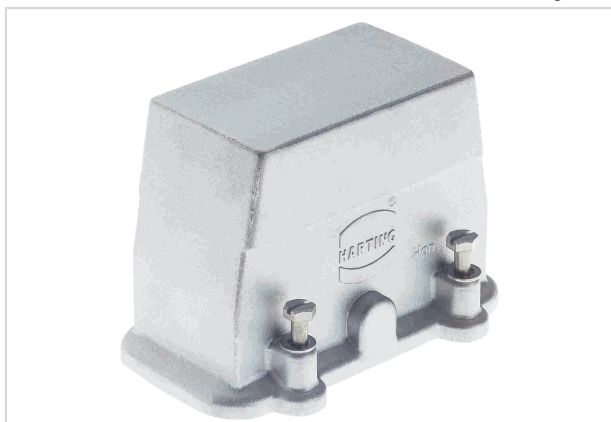


Image is for illustration purposes only. Please refer to product description.

| | |
|--------------------|---|
| Part number | 09 62 010 0541 |
| Specification | Han EMC 10 Hood Side Entry PG 21 |
| HARTING eCatalogue | https://b2b.harting.com/09620100541 |

Identification

| | |
|--------------------------|----------------------|
| Category | Hoods/Housings |
| Series of hoods/housings | Han [®] EMC |
| Type of hood/housing | Hood |

Version

| | |
|----------------------|--|
| Size | 10 B |
| Version | Side entry |
| Cable entry | 1x Pg 21 |
| Locking type | Screw locking |
| Field of application | Hoods/Housings for higher EMC requirements |

Technical characteristics

| | |
|--|--|
| Limiting temperature | -40 ... +125 °C |
| Note on the limiting temperature | For use as a connector according to IEC 61984. |
| Degree of protection acc. to IEC 60529 | IP65 |
| Type rating acc. to UL 50 / UL 50E | 4 12 |

Material properties

| | |
|-------------------------|--------------------|
| Material (hood/housing) | Aluminium die-cast |
| Surface (hood/housing) | Uncoated |
| Colour (hood/housing) | Unpainted |
| RoHS | compliant |



Pushing Performance
Since 1945

Material properties

| | |
|--------------------------------------|---------------|
| ELV status | compliant |
| China RoHS | e |
| REACH Annex XVII substances | Not contained |
| REACH ANNEX XIV substances | Not contained |
| REACH SVHC substances | Not contained |
| California Proposition 65 substances | Yes |
| California Proposition 65 substances | Nickel |

Specifications and approvals

| | |
|-----------|--|
| Approvals | DNV GL |
| UL / CSA | UL 1977 ECBT2.E235076 CSA-C22.2 No. 182.3 ECBT8.E235076 |
| CE | Yes |

Commercial data

| | |
|--------------------------------|--|
| Packaging size | 1 |
| Net weight | 252 g |
| Country of origin | Germany |
| European customs tariff number | 85389099 |
| GTIN | 5713140073296 |
| eCl@ss | 27440202 Shell for industrial connectors |