

Han 1A-CP-Lever/Latch-male insert-V2

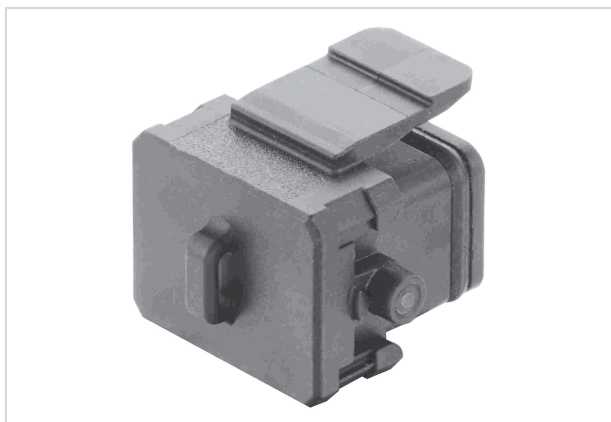


Image is for illustration purposes only. Please refer to product description.

Part number	09 10 000 5402
Specification	Han 1A-CP-Lever/Latch-male insert-V2
HARTING eCatalogue	https://b2b.harting.com/09100005402

Identification

Category	Accessories
Series	Han [®] 1A
Type of accessory	Protection cover
Description of the accessory	for male inserts
	09 10 004 300X
	09 10 008 300X
	09 10 002 260X

Version

Size	1 A
------	-----

Technical characteristics

Limiting temperature	-30 ... +90 °C
Degree of protection acc. to IEC 60529	IP65

Material properties

Material (cover)	Polyamide (PA)
Colour (accessories)	RAL 9005 (jet black)
Material flammability class acc. to UL 94	V-0
RoHS	compliant
ELV status	compliant
China RoHS	e
REACH Annex XVII substances	Not contained
REACH ANNEX XIV substances	Not contained



Pushing Performance
Since 1945

Material properties

REACH SVHC substances	Yes
REACH SVHC substances	6,6'-di-tert-butyl-2,2'-methylenedi-p-cresol

Commercial data

Packaging size	10
Net weight	4 g
Country of origin	Romania
European customs tariff number	85389099
GTIN	5713140191839
eCl@ss	27440208 Cap for industrial connectors